



(PRINCIPLE)

The membrane is set in this product has high selectivity and high permeability of water vapor. So, you'll be able to get easily dry gas by you supply only wet gas to this product.

(FEATURES)

With simple construction, extremely high performance of removing water is available.

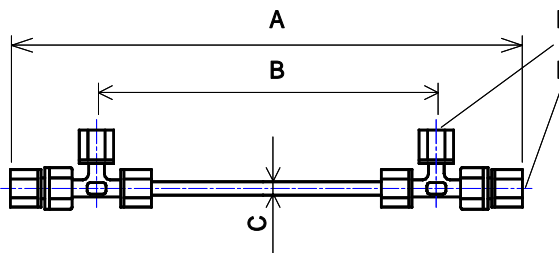
No electricity is necessary.

This hollow fiber membrane is set in SUNSEP-W has high selectivity and high permeability of water vapor, so other gases doesn't almost permeate. Compact and right weight. It can be installed at any narrow apace.

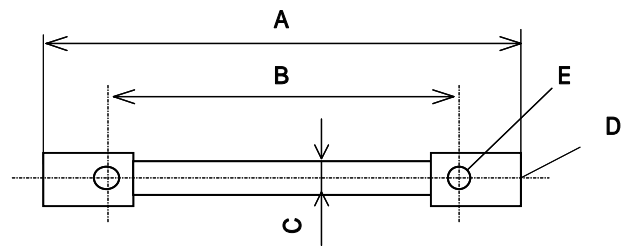
By using protection material, it enable to use for corrosion gas for long period.

OUTSIDE

You can select from two materials, PP or PTFE



SWG-A01 Type



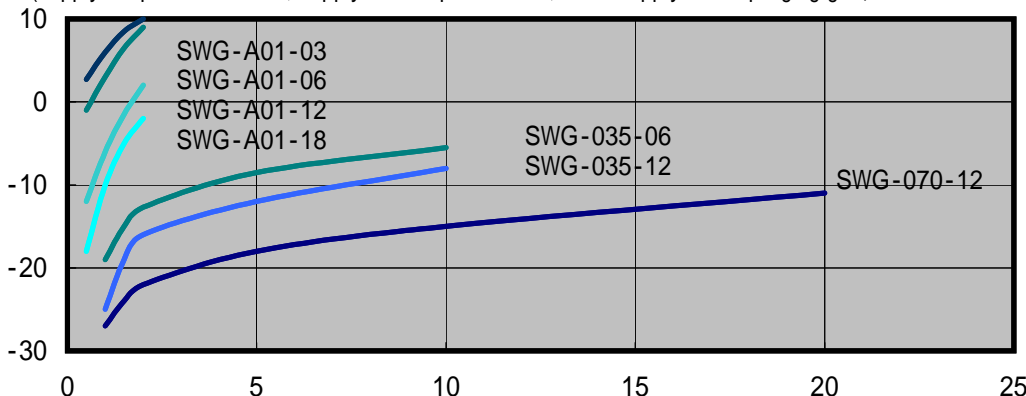
SWG-035, 070 Type

Model	Supply gas flow rate L / min (ANR)	Dimension (mm)			Diameter of conection tube		Weight (g) PP/FF
		A PP/FF	B	C	D Supply gas	E Purge gas	
SWG-A01-03	~ 2	390/380	300	6.35	1/4inch(6.35mm) < Taper shrink sealing conection >		30/35
SWG-A01-06		690/680	600				35/45
SWG-A01-12		1290/1280	1200				45/70
SWG-A01-18		1890/1880	1800				55/95
SWG-035-06/PP	~ 10	714	600	20	Rc1/4	Rc1/8	240
SWG-035-12/PP		1314	1200				345
SWG-070-06/PP	~ 20	sale one fine day		22			sale one fine day
SWG-070-12/PP		1314	1200				380

Temperature range	SWG-A01 (PP) Type	- 15 ~ + 80 (No freeze)
	SWG-A01 (FF) Type	- 15 ~ + 100 (No freeze)
	SWG-035, 070 (PP) Type	- 15 ~ + 60 (No freeze)
Pressure range	Supply gas line (inside of hollow fiber)	-0.04MPa (Gauge) ~ 0.5MPa (Gauge) at 25
	Purge gas line (outside of hollow fiber)	-0.04MPa (Gauge) ~ 0.05MPa (Gauge) at 25

Dehumidify performance

(supply air press 0.05MPa, supply air temp 20 sat, all of supply air for purging gas)



Cold you please ask seller or manufacture enquiries about selective model and directions in SUNSEP-W. We could also accept a special order and OEM.